

Domestic Commodity Prices (in Rupees)						Percentage change over		
Items	Unit	19-May-16	20-Apr-17	11-May-17	18-May-17	Previous week	Previous month	Previous year
Weekly SPI Index (Combined)		214.66	220.99	220.47	220.61	0.1	-0.2	2.8
Wheat	10 Kg	322.65	332.79	327.28	324.34	-0.9	-2.5	0.5
Wheat Flour Bag Avg. Qlt.	10 Kg	370.59	377.29	371.74	370.37	-0.4	-1.8	-0.1
Rice Basmati Broken	Kg	59.60	67.43	68.14	68.75	0.9	2.0	15.4
Rice Irri-6/9	Kg	46.37	49.67	49.67	49.67	0.0	0.0	7.1
Mash Pulse Washed	Kg	274.58	192.02	194.06	194.42	0.2	1.2	-29.2
Gram Pulse Washed	Kg	142.02	130.17	131.33	131.48	0.1	1.0	-7.4
Beef	Kg	319.77	332.36	332.36	332.36	0.0	0.0	3.9
Mutton	Kg	639.43	679.91	681.50	681.50	0.0	0.2	6.6
Chicken Live (Farm)	Kg	178.22	164.47	158.39	162.23	2.4	-1.4	-9.0
Egg Hen (Farm)	Doz	71.19	82.76	85.28	87.95	3.1	6.3	23.5
Sugar	Kg	63.78	59.84	59.07	58.09	-1.7	-2.9	-8.9
Gur	Kg	88.08	83.52	83.20	84.05	1.0	0.6	-4.6
Milk Fresh	Ltr	79.51	81.19	81.19	81.19	0.0	0.0	2.1
Veg. Ghee (Tin)	2.5 Kg	445.12	460.18	459.29	459.59	0.1	-0.1	3.3
Cooking Oil (Tin)	2.5 Ltr	454.35	466.94	466.06	466.35	0.1	-0.1	2.6
Tea Packet (Yellow Lable)	200 Gm	157.90	200.66	203.70	203.70	0.0	1.5	29.0
Kerosene	Ltr	74.87	78.88	78.81	78.81	0.0	-0.1	5.3
Gas Charges Up To 3.3719	Mmbtu	128.33	128.70	128.70	128.70	0.0	0.0	0.3
L.P.G.(11 Kg Cylinder)	Each	934.41	1087.50	1027.76	993.79	-3.3	-8.6	6.4
Elec.Chrg. 1-50	Unit	2.00	2.00	2.00	2.00	0.0	0.0	0.0
Petrol	Ltr	65.12	74.85	74.85	74.85	0.0	0.0	14.9
Diesel	Ltr	73.44	83.97	83.97	83.97	0.0	0.0	14.3
Urea Sona	50 Kg bag	1810.00	1365.00	1355.00	1344.00	-0.8	-1.5	-25.7
DAP	50 Kg bag	2912.00	2595.00	2589.00	2606.00	0.7	0.4	-10.5
Cement	50 Kg bag	513.00	544.00	539.00	537.00	-0.4	-1.3	4.7
Furnace Oil*	Metric ton	31501.20	45597.60	47809.20	45879.60	-4.0	0.6	45.6
Cotton [®]	Mand (37.32 Kg)	5685.00	6885.00	6835.00	6985.00	2.2	1.5	22.9
Gold 24 ct [®]	10 Gm	42257.00	43671.00	42685.00	43242.00	1.3	-1.0	2.3

Source:

Pakistan Bureau of Statistics

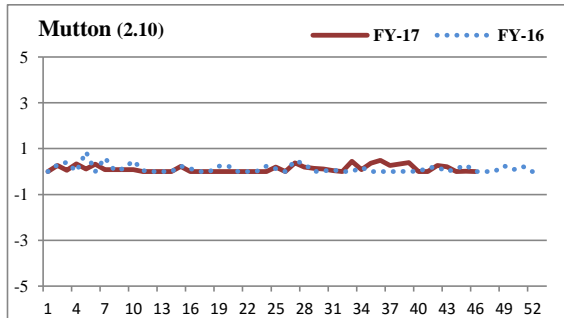
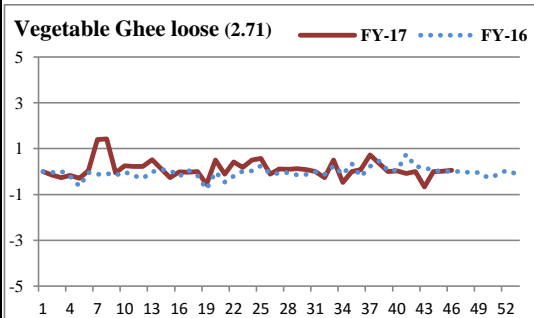
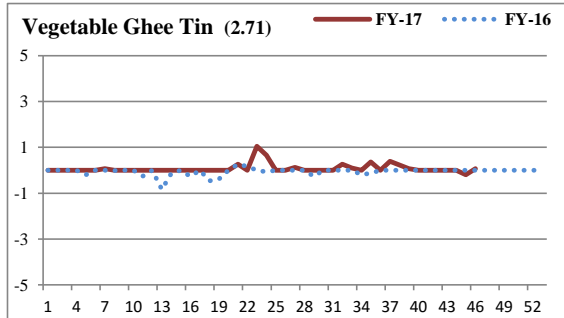
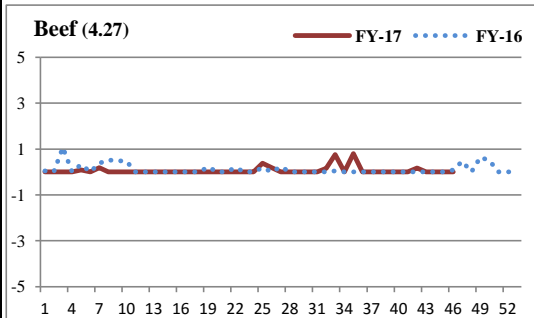
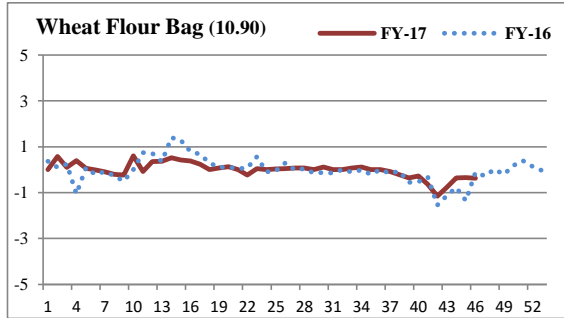
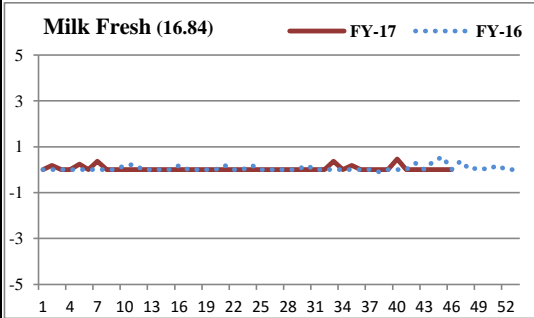
*Pakistan State Oil (www.psopk.com)

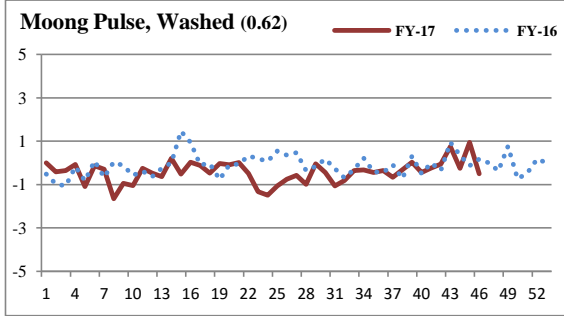
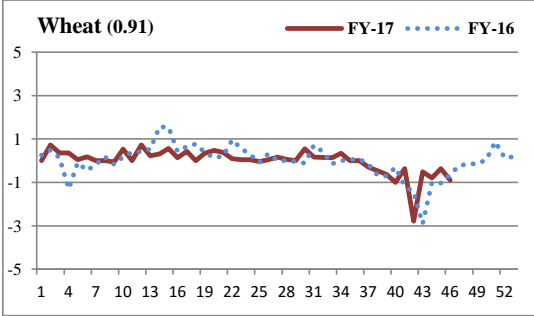
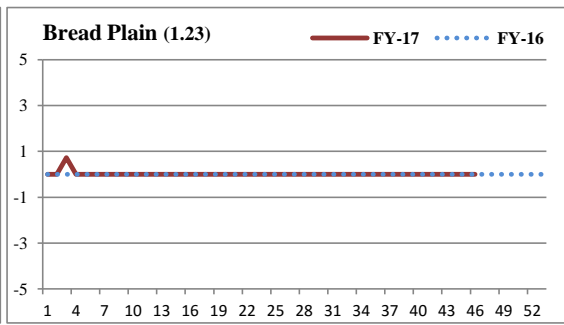
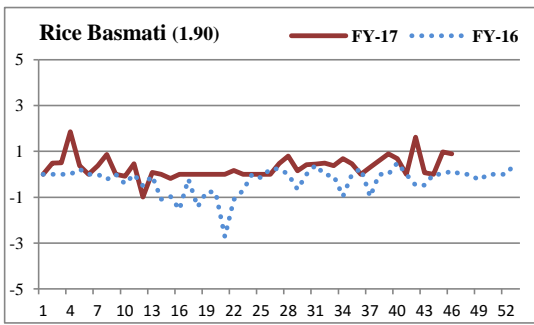
[®]Business Recorder (www.brecorder.com)

Trend of Top 25 SPI Items (Weight Wise)

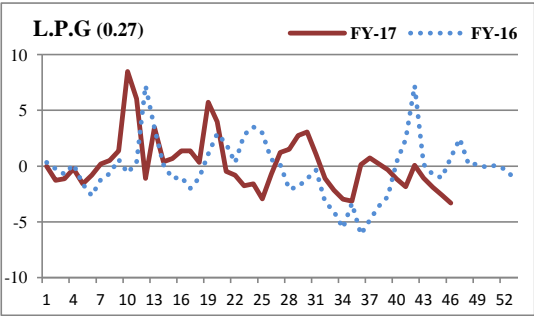
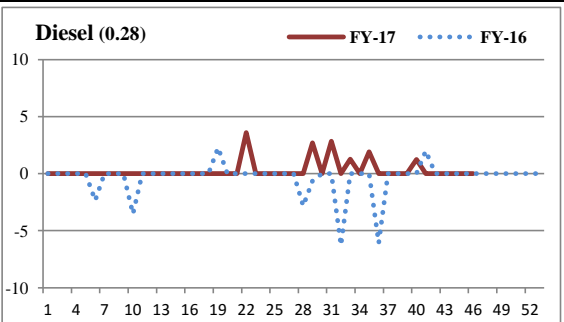
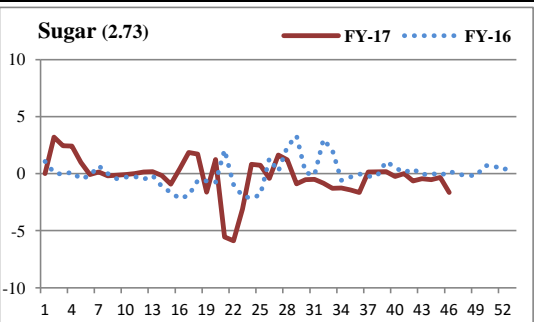
Sr. No.	Item	Unit	Weight	Prices Weekly			YoY% Change			YoY% Change Direction	WoW% Change			WoW% Change Direction
				19-May-16	11-May-17	18-May-17	19-May-16	11-May-17	18-May-17		19-May-16	11-May-17	18-May-17	
				1	Milk Fresh	Ltr	16.84	79.51	81.19	81.19	3.01	2.50	2.11	↓
2	Elec.Chrg. 1-50	Unit	11.51	2.00	2.00	2.00	0.00	0.00	0.00	→	0.00	0.00	0.00	→
3	Wheat Flour Bag Av. Qlt.	10 Kg	10.90	370.59	371.74	370.37	-2.31	0.04	-0.06	↑	-0.27	-0.35	-0.37	↓
4	Petrol	Ltr	5.12	65.12	74.85	74.85	-13.28	14.94	14.94	↑	0.00	0.00	0.00	→
5	Beef	Kg	4.27	319.77	332.36	332.36	5.04	4.42	3.94	↓	0.46	0.00	0.00	→
6	Gas Charges Up To 3.3719	Mmbtu	4.12	128.33	128.70	128.70	3.34	0.29	0.29	↓	0.00	0.00	0.00	→
7	Chicken Live (Farm)	Kg	3.56	178.22	158.39	162.23	2.06	-6.97	-8.97	↓	4.68	3.02	2.42	↓
8	Sugar	Kg	2.73	63.78	59.07	58.09	6.41	-7.47	-8.92	↓	-0.09	-0.34	-1.66	↓
9	Veg. Ghee (Tin)	2.5 Kg	2.71	445.12	459.29	459.59	-3.99	3.18	3.25	↑	0.00	-0.19	0.07	↑
10	Veg.Ghee Loose	Kg	2.71	139.28	145.23	145.32	-1.85	4.27	4.34	↑	0.00	0.01	0.06	↑
11	Cooking Oil (Tin)	2.5 Ltr	2.30	454.35	466.06	466.35	-3.59	2.58	2.64	↑	0.00	-0.19	0.06	↑
12	Tea Packet (Yellow Lable)	200 Gm	2.15	157.90	203.70	203.70	6.83	29.01	29.01	↑	0.00	0.00	0.00	→
13	Mutton	Kg	2.10	639.43	681.50	681.50	6.69	6.58	6.58	↓	0.00	0.02	0.00	↓
14	Rice Basmati Broken	Kg	1.90	59.60	68.14	68.75	-14.13	14.33	15.35	↑	0.00	0.98	0.90	↓
15	Long Cloth (Coarse Latha)	Mtr	1.85	205.27	206.47	208.82	1.67	0.58	1.73	↑	0.00	0.14	1.14	↑
16	Cigarettes K-2	20'S	1.59	60.12	67.35	67.35	31.21	12.03	12.03	↓	0.00	0.00	0.00	↓
17	Lawn	Mtr	1.47	251.21	254.60	255.77	3.68	1.35	1.82	↓	0.00	0.00	0.46	↑
18	Onions	Kg	1.42	31.59	30.24	28.45	-31.90	-9.81	-9.94	↑	-5.79	-1.66	-5.92	↓
19	Bananas	Doz	1.39	85.89	86.27	89.04	1.80	4.66	3.67	↑	4.20	1.83	3.21	↑
20	Curd	Kg	1.35	93.19	95.86	96.44	3.27	3.19	3.49	↑	0.31	0.00	0.61	↑
21	Tele. Local Call	Each	1.31	3.94	3.94	3.94	0.00	0.00	0.00	→	0.00	0.00	0.00	→
22	Potatoes	Kg	1.25	21.29	33.67	35.66	11.76	67.35	67.50	↑	5.82	3.38	5.91	↑
23	Bread Plain Mid.Size (340-400 Gm)	Each	1.23	40.82	41.12	41.12	0.00	0.73	0.73	↑	0.00	0.00	0.00	→
24	Egg Hen (Farm)	Doz	1.19	71.19	85.28	87.95	-15.86	18.35	23.54	↑	-1.21	-0.87	3.13	↑
25	Tomatoes	Kg	1.18	22.68	32.78	30.38	-60.58	52.89	33.95	↑	5.78	16.24	-7.32	↓

Weekly Trend in Major SPI Items (-5 to +5)%

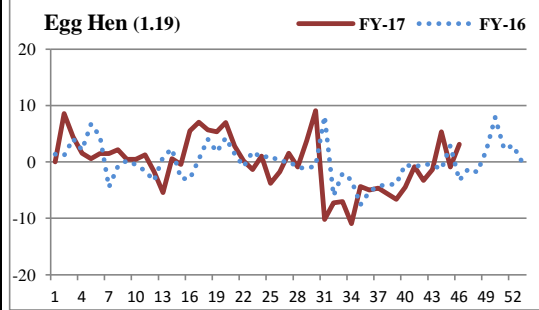
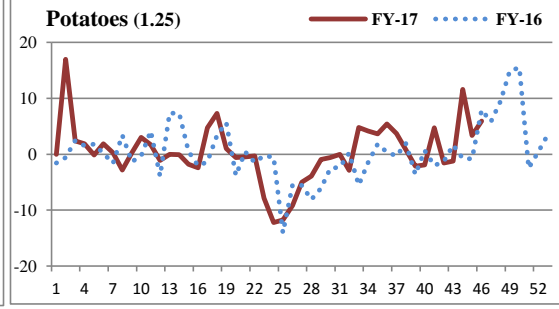
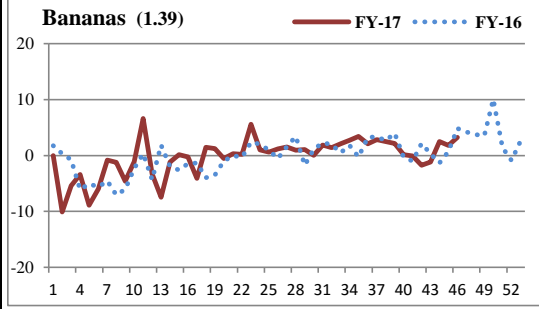
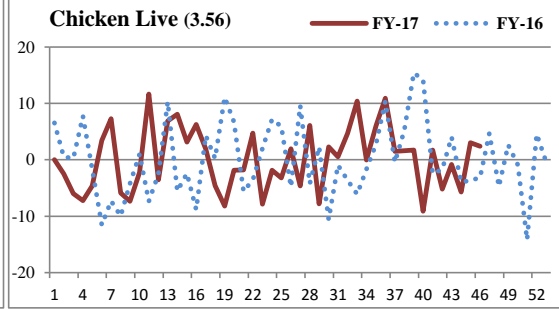
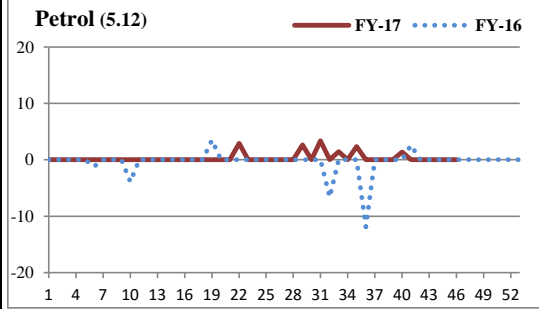




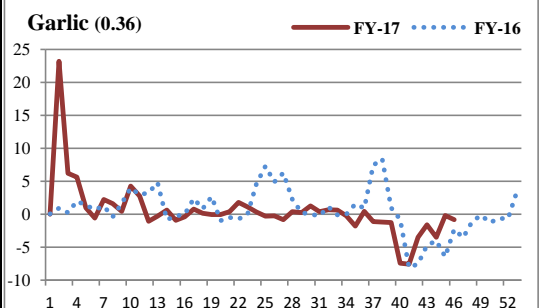
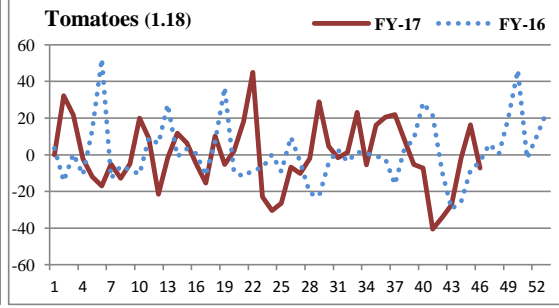
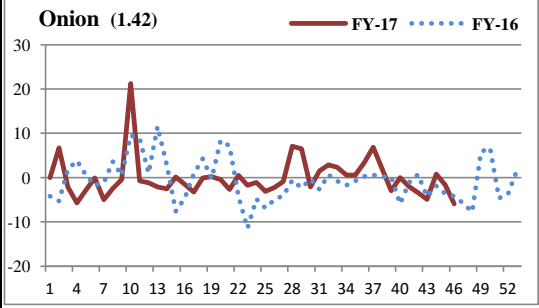
Weekly Trend in Major SPI Items (-10 to +10)%



Weekly Trend in Major SPI Items (-20 to +20)%



Weekly Trend in Major SPI Items (Beyond ± 20%)



Global Commodity Indices and Prices						Percentage change over		
Items	Unit	20-May-16	21-Apr-17	12-May-17	19-May-17	Previous week	Previous month	Previous year
S&P GSCI Commodity Index*		367.3	383.0	379.5	391.0	3.0	2.1	6.5
Bloomberg Commodity Index (BCOM)**		84.9	83.9	83.5	84.7	1.5	1.0	-0.2
Energy (S&P Index)		163.2	172.9	168.9	176.6	4.6	2.2	8.2
Crude Oil (S&P Index)		265.3	271.9	264.0	277.7	5.2	2.1	4.7
NYMEX WTI (Jun 17)	US\$/barrel	47.8	49.6	47.8	50.3	5.2	1.4	5.4
ICE Brent (July 17)	US\$/barrel	49.3	52.4	50.8	53.6	5.4	2.2	8.8
Dubai Spot (Index)	US\$/barrel	45.7	51.4	49.5	52.0	5.1	1.2	13.9
Arab Light Spot Asia (Index)	US\$/barrel	44.9	51.4	49.1	51.8	5.4	0.8	15.2
Coal (DJ US Total Market Index)		32.5	37.9	40.2	39.7	-1.0	4.7	22.1
Coal (US)	US\$/MT	48.0	45.6	45.6	45.5	-0.2	-0.2	-5.2
Natural Gas (S&P Index)		103.3	149.5	163.8	157.0	-4.1	5.0	51.9
Natural Gas (Jun 17)	US\$/MMBTU	2.2	3.2	3.4	3.3	-4.9	2.0	47.5
Industrial metals (S&P Index)		253.9	316.8	312.4	318.9	2.1	0.7	25.6
Aluminum (LME, 3m future)	US\$/MT	1547.0	1933.5	1891.0	1943.5	2.8	0.5	25.6
Copper (LME, 3m future)	US\$/MT	4578.0	5623.0	5559.5	5682.0	2.2	1.0	24.1
Lead (LME, 3m future)	US\$/MT	1675.0	2142.0	2126.0	2094.0	-1.5	-2.2	25.0
Nickel (LME, 3m future)	US\$/MT	8500.0	9345.0	9315.0	9360.0	0.5	0.2	10.1
Tin (LME, 3m future)	US\$/MT	16450.0	19750.0	19845.0	20400.0	2.8	3.3	24.0
Zinc (LME, 3m future)	US\$/MT	1866.0	2584.0	2554.0	2616.0	2.4	1.2	40.2
HR Coil Steel US (May 17)	US\$/MT	615.0	640.0	610.0	613.0	0.5	-4.2	-0.3
Precious metals (S&P Index)		1647.8	1701.6	1617.2	1651.5	2.1	-2.9	0.2
Gold (Spot)	US\$/Troy Ounce	1252.2	1284.1	1228.1	1255.9	2.3	-2.2	0.3
Platinum (Spot)	US\$/Troy Ounce	1022.0	972.5	921.1	939.8	2.0	-3.4	-8.0
Silver (Spot)	US\$/Troy Ounce	16.5	17.9	16.5	16.9	2.4	-5.9	2.1
Agriculture (S&P Index)		305.0	287.8	291.2	291.9	0.2	1.4	-4.3
Cotton (NYB-ICE, Jul 17)	US cents/pounds	61.7	79.3	82.2	78.5	-4.5	-1.1	27.2
Sugar (LIF, Jul 17)	US\$/MT	376.3	364.0	341.9	361.1	5.6	-0.8	-4.0
Corn (CBOT, Jul 17)	US\$/MT	155.3	143.2	146.1	146.7	0.4	2.4	-5.6
Rice (CBOT, Jul 17)	US\$/MT	259.5	221.6	229.5	238.8	4.0	7.8	-8.0
Wheat (CBOT, Jul 17)	US\$/MT	171.9	154.7	159.0	159.9	0.6	3.4	-6.9
Soybeans (CBOT, Jul 17)	US\$/MT	394.7	353.0	353.8	350.1	-1.0	-0.8	-11.3
Palm oil (Bursa Malaysia, Apr 17)	US\$/MT	619.9	625.1	633.6	636.1	0.4	1.8	2.6
Tea (BP1 Best, Kenya)	US\$/Kg	2.8	3.5	3.5	3.5	0.0	0.0	27.3
Others								
Urea Granular (US Gulf)	US\$/MT	200.0	185.0	170.0	172.0	1.2	-7.0	-14.0
DAP (US Gulf)	US\$/MT	354.0	370.0	355.0	355.0	0.0	-4.1	0.3

Source: Bloomberg

LME: London Metal Exchange, CBOT: Chicago Board of Trade, NYMEX : New York Mercantile Exchange, DJ:Dow Jones

* The S&P GSCI(standard&poor's Goldman sachs commodity Index) is widely recognized as a leading measure of general price movements and inflation in the world economy.

It provides investors with a reliable and publicly available benchmark for investment performance in the commodity markets.

**Bloomberg Commodity Index(BCOM) reflects commodity futures price movements

